

---



# The Presbyterian Post

February 2025

---

## Star Words

On January 12, your Worship Team invited us to randomly choose a star without knowing the word printed on the reverse side. Like the Magi, unsure of exactly what they would find, they let the spirit guide them. Similarly, as you pick up a star, you trust the Spirit nudged you towards a word that can guide you, inspire you, and challenge you throughout the coming year.

What have you learned about your Star Word?



Is your Star Word visible for you to see each day? Keep the star someplace special, somewhere you will see it throughout the coming year. Perhaps on the refrigerator, on the bathroom mirror, taped to the dashboard of the car, at work cubicle... someplace seen regularly so it can serve as a guide. Speaking of a guide... you can use this STAR WORD REFLECTION GUIDE to help you pay attention to the Spirit's leading throughout the year.

Star Words can instantly make sense to us, or be a bit of a puzzle, or a mystery to us. Consider your Star Word your spiritual GPS. Perhaps you will see something in your word that others may not . . . like the magi who determined the Bethlehem Star marked their destiny. What might we learn from one word? What new ideas might evolve? What treasured wisdom might surface? Consider your word in prayer or meditation. What is God inviting you to through your word? How does your word show up in your life? How many ways can this word be interpreted? Consider how this meaning can evolve and change over the year.

For some, the word's meaning might pop up right away. For others, there may be no immediate significance, but over the months ahead, meaning will emerge. Some may encounter elements of both immediate guidance and emerging understanding. Throughout the year, we encourage you to share stories about your Star Word and how it is working in your lives.

Be open to seeing God at work through the most unlikely situations and un-Christlike people. Allow the separation of sacred and secular to be reunited. Welcome the unexpected and unexplainable mysteries. Follow this star, expecting to encounter the Christ child, the Messiah, Lord of Lord, King of Kings. Immanuel, God with us.

## AV Task Force

At their January meeting, your Session approved forming a 5-person task force to assess the current AV systems and provide session with at least 2 proposals for future directions for the church to go.

Pastor Craig shared that the current configuration of audio/visual equipment in the sanctuary is frequently needing repairs of some sort. As soon as one item is repaired, another one breaks down. John Neville is creating a list of items that currently need repair/replacement. It was noted that video standards have changed and the equipment currently in use does not meet the new standards.

Session brainstormed potential candidates for this task force noting that current members of the AV team will provide primary insights from their extensive experience, but will probably not be directly involved on the task force to help protect them from being overburdened. Session plans to narrow down the list of candidates in the first weeks of February. If you have suggestions about who might serve on this task force, please contact Pastor Craig or Clerk of Session Dave Erickson.



## Lenten Mid-Week Services Are Back!

We are excited to announce our schedule for mid-week Lenten services:



**Wednesday, March 5th Ash Wednesday:** One service at 6:30 PM.

**Wednesdays, March 12th through April 9th, we will have two service and faith formation gatherings:**

**Mid-day- 12:15 PM – 12:45 PM:** In-person worship at First Presbyterian Church, with Zoom access using our usual worship link. This service will maintain a more traditional tone, followed by a **Soup/Bible Study in the Fellowship Hall from 12:45 PM – 1:30 PM.** (Note: Zoom will not be available for the Soup/Bible Study.)

**Evening: 6:30 PM – 7:30 PM:** In-person gathering off-site (location TBD) for food and Bible Study. You are welcome to join us for one or both of these opportunities to refresh your spirit in the middle of the week through fellowship and God's Word.



**Holy Week Maundy Thursday Service:** Thursday, April 17th at 7:00 PM.

We hope to see you there!

## EDUCATIONAL OPPORTUNITIES

### JANUARY ADULT GROWING CONNECTIONS SUNDAYS 10:15-11:15AM

#### February 2 Sermon Discussions

On the first Sunday of the month as usually is the custom, you are invited to meet with other worshipers to discuss and reflect on the scriptures and message of the worship service.

#### February 9 Finding Hope

Pastor Craig share a few key findings from his doctoral research about leadership as a local theologian that are guiding us into and through a time of discernment about what it means to be the church and what this might look like in the emerging context of western culture.

Your Session, at the September 2024 meeting reflected on their Session Retreat and voted to *“enter into a time of discernment with the congregation regarding the mission of FPC in order to determine how the church should best be organized.”* With that focus in mind, your Personnel Team has set a goal for Pastor Craig to *“Prayerfully cultivate an atmosphere and environment for people to discern together, through action-reflection experiments, what God is calling this congregation to do and to become.”*

Portions of his research are available [\[HERE\]](#) for you to read as we journey into this renewed vision of being followers of Jesus Christ.

#### February 16 Feed My Starving Children MobilePack

Members from a local church will share information about the upcoming Feed My Starving MobilePack and about their experience in passing out the FMSC Manna Packs in El Salvador in 2014 and 2015.

#### February 23 Big Brothers Big Sisters Program



The Big Brothers Big Sisters Program is a mentoring organization that pairs adult volunteers with children ages 6 and up to help improve their lives. Your help is needed. Come and find out more about the program and see if God is calling you to this opportunity or maybe calling you to share this information.

#### Sunday School 10:15-11:15am

Our theme for the year is "F.R.O.G: Fully Rely on God," guiding our activities. The Sunday School program for PreK-12th grade uses the Feasting on the Word curriculum, which aligns with the lectionary, allowing all classes to explore the same scripture passages read during the church service.

Nursery (Infant through age 3)

Middle School (6th to 8th Grades)

Primary (Preschool to 2nd Grade)

High School (9th to 12th Grades)

Grade School (3rd to 5th Grades)





On January 12, those attending Growing Connections were treated to an informative discussion about volunteer service at the Fondy Food Pantry.

Cindy P., Orv and Gail K., Mike P. and Melissa H. all serve in distinct roles, with additional ways in which people volunteer. This well-run organization plays a significant role in making nutrition available to food insecure people in Fond du Lac County. Learn more about the [Fondy Pantry here](#).

Donations with use by dates in the current or future years is appreciated.

In the coming months we will feature other ways in which our members serve in the community. Let us know if you would share how you serve as a volunteer.

Carol Smith, Growing Connections Team Member.

## Prayer Requests

If you or someone you know would like to be added to our prayer list, please [click here](#) to complete an online form. Or contact the church office.



Prayer request cards are available in the Prayer Box located in the Narthex, in the church pews, or online ([click here](#)). You can place your prayer request in the offering plate or the lock box at the church office door. For electronic prayer requests, please complete the form and click submit.



January 19-February 9

Bring your food items in support of your favorite football team to the table in the narthex.

All food and donations collected will support the



## February 21 7:00-9:00pm Cribbage

Join us for an exciting game of Cribbage on February 21 at 7:00 pm in Fellowship Hall.



It will be an evening filled with fun, friendship, and fellowship. Please bring your favorite drink and get ready to enjoy complimentary snacks.

Never played before? No problem!

Our seasoned players will be on hand to guide you through the game. Don't miss this perfect chance to learn a new pastime while mingling with new friends.



Since 2013 the Community of Fond du Lac has come together to pack nutritionally complete meals specially formulated for malnourished children all over the world.

The process is simple. Donations given by people just like you fund the meal ingredients. Volunteers hand-pack the meals. Meals are donated to FMSC food partners around the world, where kids are fed, and lives are saved!

91% of donations go to the food program. 99% of food shipments reach their destination---the starving children.

Last year's community wide MobilePack event was a great success. Thank you everyone for your hard work and all your support of the 2024 Fond du Lac MobilePack. Through your contributions, we packed 612 Boxes – 132,192 meals – 362 kids for a year were shipped to Nicaragua, in Central America and Togo, in Africa.



Donate or Volunteer!

**Our goal for the March 8, 2025, MobilePack is to pack 139,968 meals at a cost of \$41,000 utilizing 600 volunteers.** We have already raised over \$10,000 towards this goal. There are two ways that you can help with the MobilePack campaign—a monetary donation and/or volunteering your time to pack the meals. Each meal costs 29 cents so every donation makes an impact. A donation of \$106 will feed a child for an entire year.

Meals are needed now to help people all over the world. Submit donations electronically at [the Feed My Starving Children FDLMobilePack website](#) or can also donate online on the [church website](#) or take one of the hearts and self-addressed envelopes from the tree in the Narthex, enclose the amount that you would like to donate and drop it in the offering plate or in the church office.

Public volunteer sign up goes live online on Tuesday, February 8 for our Saturday March 8<sup>th</sup> MobilePack event at the Fond du Lac Fairgrounds Rec Building or you can sign up on the table in the Narthex. In past years, the volunteer slots went fast so be sure to register early!

## Special Host Sundays



Join us for Special Host Sunday, the first Sunday of each month. It is a great opportunity for ministries to highlight their mission and raise funds.

Your contributions will directly support these causes and make a meaningful impact!

February 2 Fellowship Time funds will support the Fond du Lac MobilePack scheduled for March 8.

Thank you! The Loving Team



## Every Wednesday - 8:00 am Men's Breakfast

Every Wednesday, men of the church meet for breakfast at Pump 'n Pantry at 8:00 am. (329 W. Pioneer Road, FDL).



Enjoy a relaxed atmosphere with a freshly brewed cup of coffee in hand and good friends gathered around the table. It's the perfect way to kick off your Wednesday.

## Women in Faith

Wednesday, February 12  
5:30-7:30 pm

If you are interested in meeting new people and having an enjoyable time, check out the Women in Faith gathering on Wednesday, February 12 from 5:30-7:30 pm.

We will share a light potluck meal with **Spaghetti** as the main dish. The meal sign up is on the Welcome Center in the Narthex or click here for a [Food Sign-Up Sheet](#).



Following the meal, we will enjoy fun fellowship time with a "Flowering Making" craft activity.

Everyone is welcome, feel free to bring a friend. Contact Jennifer or with any questions.

## February 13 - Ruby's Pantry



- Food distribution will take place at **GRACE CHRISTIAN CHURCH**. Please enter on the **EAST** side. Park on the South side of the building.
- Online registration is available [here](#). Please arrive at your appointed time.
- All guests must enter the building to register and receive their pick-up number.
- Further instructions will be available, once guests have registered.
- Two food shares are allowed, per vehicle.
- Trunk must be empty.
- Food will be loaded into trunks by our volunteers.
- Do not bring boxes, bags, etc. for food.
- Bathroom facilities are not available to the public

<b>Where</b>	Grace Christian 1596 4th St, Fond du Lac, WI
<b>When</b>	February 13
<b>Open</b>	4:30-6:00pm to Volunteer
<b>Donation</b>	<b>\$25.00 Cash Only</b>

Questions contact Grace Christian Church at: 920.923.5292 or [rachelrudzik@gccfdl.org](mailto:rachelrudzik@gccfdl.org)

If you are interested in volunteering at Ruby's Pantry please complete the application at: [www.rubyspantry.org](http://www.rubyspantry.org).

## Usher Training

February 16, at 10:30am  
The usher training is for anyone interested in ushering and/or is an usher.

We will meet in the narthex and review how ushering and greeting is a ministry of hospitality. In addition, we will talk about how to become an usher/greeter and tools available to make all feel comfortable and welcome.



Please join us on February 16<sup>th</sup> for this informative training.

## Inclement Weather

Please check one of the following resources for weather-related cancellations of Worship Services or church activities.

### Church Website

[www.fdlpresbyterian.org](http://www.fdlpresbyterian.org)

### Internet

[www.kfiz.com](http://www.kfiz.com)  
(KFIZ Radio)

### Radio

Sunny 97.7

### TV

Channel 2 WBAY  
Channel 5 WFRV





## What is Per Capita?

In the Presbyterian Church USA system of governance, each member of the congregation is assessed a *per capita* amount to support the work of the church through its three governing levels: Winnebago Presbytery, Synod of Lakes & Prairies, and the General Assembly.

The *per capita* covers the cost of operating these three separate entities, various committees, and commissions, along with funding the annual General Assembly Meeting.

Our Session has supported this assessment as an appropriate way to assist in helping to meet the needs of our denomination.

The per capita for 2025 is \$40.00 per church member. First Presbyterian Church has paid this amount regardless of whether you contribute \$40.00. Please note that per capita is separate from your usual donation or tithe.

You can pay your per capita amount in the following manner:

Check (Write Per Capita on the memo line.)

Electronically (Click [here](#) to go to Online Giving.)

Thank you for prayerfully considering the opportunity to help First Presbyterian Church and the Presbyterian Church USA system. We appreciate your generosity.

## QUALIFIED CHARITABLE DISTRIBUTIONS (QCD)

Did you know that if you are over age 70 ½ you can make a charitable contribution to our church directly from certain Retirement Accounts?

Normally, distributions from a retirement are taxable during the year in which they are received. Charitable contributions may be deductible if itemized on tax returns. However, by using Qualified Charitable Distribution (QCD), contributions can be tax-exempt instead of tax-deductible.

A QCD is a withdrawal paid by your Retirement Account custodian directly from your account. It serves as a popular way to do good while also satisfying the holder's required minimum distribution (RMD). Our church is a qualified recipient as a 501 (c)(3) charitable organization.

Available to owners and beneficiaries age 70 ½ or older, a QCD offers tax-free distributions of up to \$108,000 in 2025. QCD amounts are not subject to be taxed by the IRS and they cannot be itemized as tax-deductible gifts. They are reported by following instructions when filing income tax returns.

Information about QCDs and conditions that apply is available online, from your financial custodian, or from a tax advisor.

Please inform the financial assistant in our church office of your name and the firm issuing the check when having these funds sent to the church.



## The New Freedom Group

For over 10 years, the AA group has been meeting at the First Presbyterian Church. In-person meetings take place every Tuesday evening at 6 PM.



The fourth Tuesday of each month is designated as an Open Meeting, and there is an Open Speaker Meeting every quarter in March, June, September, and December.

If you have any questions, please feel free to reach out to Les M. or contact the church office.



**GriefShare Support**  
**Thursdays 6:00-8:00 PM**

**January 9-April 3, 2025**

**at the First Presbyterian Church**

If you have any questions, we are here to listen and support you, please contact the church office.

## First Presbyterian Church 22<sup>nd</sup> Annual Model Train Show From the smallest Z-Gauge to the largest G-Gauge.



April 5  
10:00 am-4:00 pm

April 6  
10:00 am-2:00 pm

Free Admission, Fun for all ages, Concessions sold to support mission work.

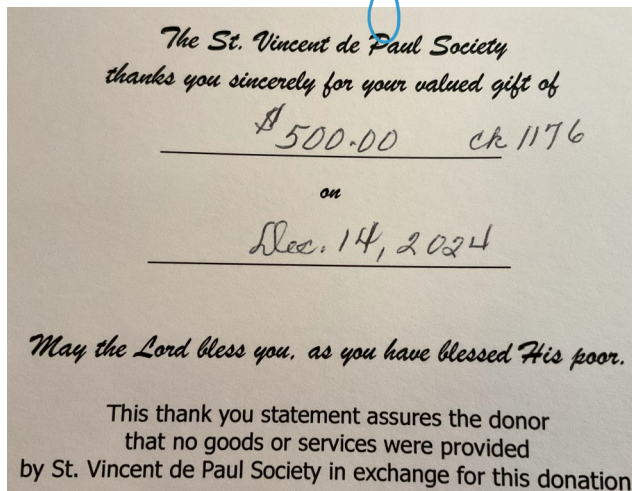
If you are interested in sharing a train, helping in the fun please contact Les M. or the church office.

## Thank You!

We received a letter from ADVOCAP Head Start staff thanking us for our support of Head Start families. "... my heartfelt gratitude to each of you for any role you had in making the Christmas season brighter and more exciting for our Head Start families..." Several handwritten notes of thanks from Head Start families was also included.

Thank you for sharing God's love in our community.

*thank you!*







## Join the First Presbyterian Church Fond du Lac as the

# Full-Time Communications Coordinator and Administrative Assistant!

Do you have a desire to learn and take initiative?

Do you have excellent organizational skills?

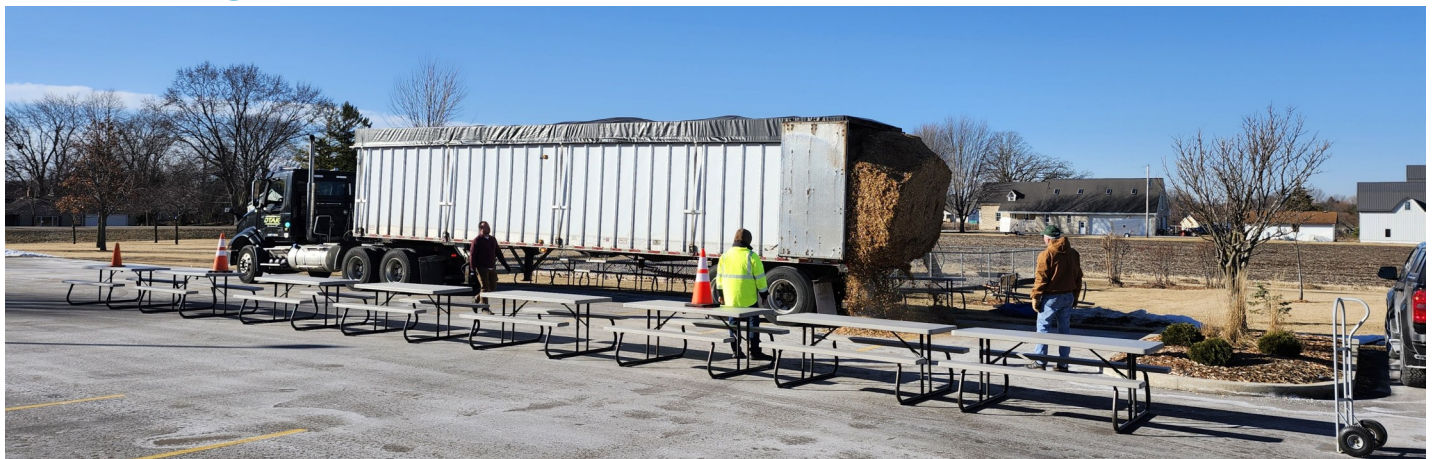
Do you have experience with MS 365, social media, and websites?

Would you like to impact many lives and further God's kingdom?



For more information and a full job description, email the personnel chair at [fpcfdlstaffing@gmail.com](mailto:fpcfdlstaffing@gmail.com)

*thank you!*



Delivery of mulch for the playground. Thank you to all who helped with the many projects this week in the church.

We will be serving a carry-out meal Loaves and Fishes again on Wednesday, February 26 from 4-6pm at the Church of Peace (158 S. Military Rd).

If you are available to help prepare, serve, or clean up after the meal, please contact the office. Dessert donations are always needed for the meal. Desserts can be brought to First Presbyterian Church until Wednesday, Feb 26 at 3 pm.

Thank you to everyone who can help us serve the community in need. Contact the church office if you can help us out on the 26<sup>th</sup> or if you have any questions. We invite you to join us in making a difference with our future Loaves and Fishes serving dates:

- |                                  |                                       |
|----------------------------------|---------------------------------------|
| Wednesday, April 2 <sup>nd</sup> | Wednesday, September 10 <sup>th</sup> |
| Wednesday, May 28 <sup>th</sup>  | Wednesday, December 17 <sup>th</sup>  |
| Monday, July 28 <sup>th</sup>    |                                       |

**Mitten Tree!**

We are collecting hats, scarves, socks, underwear and mittens for all ages to be shared as we serve the Loaves and Fishes Meal.



Please help those in need stay warm this winter.

**Hope on the Block**

Thank you for your continued support of the Hope on the Block. Please bring items to the box in the Narthex.



- |                         |                         |
|-------------------------|-------------------------|
| Non-perishable Food     | Deodorant               |
| Toilet Paper            | Feminine Care           |
| Toothbrushes/Toothpaste | Tissue                  |
| Shampoo/Conditioner     | First Aid / Band Aids   |
| Body Wash/Soap          | Chapstick               |
| Sunscreen               | Combs/Brushes/Hair Ties |

**First Presbyterian Church Blood Drive**

Thank you for making a difference in our community by donating at the First Presbyterian Church Blood Drive.

Thanks to some amazing blood donors, in 2024 48 blood products were collected through the First Presbyterian Church Blood Drives.

That means 144 patients in Wisconsin hospitals got the help they needed. From cancer patients and burn victims to organ recipients and accident victims, every pint counted.



Mark your calendar for future First Presbyterian Church Blood Drive Dates:

- Tuesday, March 11**
- Wednesday, May 7**
- Tuesday, July 8**
- Tuesday, September 9**
- Tuesday, November 4**
- Tuesday, December 30**



## CHURCH STAFF

**Rev. Dr. Craig Alwin**  
pastor@fdlpresbyterian.org

**Kris Bartelt**  
Music and Worship Coordinator  
kbartelt@fdlpresbyterian.org

**Mary Robotka**  
Financial Assistant  
mrobotka@fdlpresbyterian.org

**Jennifer Zander**  
Faith Formation Coordinator  
Volunteer Coordinator  
jzander@fdlpresbyterian.org

## ELDERS ON SESSION

Dave Erickson  
Clerk of Session

Mary Bacon  
Deacons, Personnel,  
Presbytery Delegate

Susan Baker  
Worship

Laurie Christie  
Serving, Nominating

Debbie Cooley  
Loving

Todd Hayes  
Learning, Nursery

Larry Johnson  
Buildings & Grounds

Joanne Marchionda  
Worship Team, Nursery

Terry Rehn  
Buildings & Grounds

Mike Warntjes  
Endowment, Finance,  
Personnel

## February

**Deacon of the Month:**  
Gail Kamphuis

**Elder of the Month:**  
Sue Baker

## VOLUNTEER STAFF

Joanne Marchionda  
Handbell Chor Director

John Neville  
Treasurer

Judy Dassow  
Assistant Treasurer

Dave Weber  
Custodian Assistant

## DEACONS

Judy Dassow\*

Gail Kamphuis

Orv Kamphuis

Stuart Kastein

Mary Ellen McMeen

Kim Miller

Kay Mullins

Phyllis Munson

Wendy Peachey

Carol Smith

Lew Smith

Amber Summeril\*

\* denotes Deacon Moderators

## GETTING CONNECTED:

Office Phone  
920.922.0425

Office Email  
[fdloffice@fdlpresbyterian.org](mailto:fdloffice@fdlpresbyterian.org)



Website  
[www.fdlpresbyterian.org](http://www.fdlpresbyterian.org)



Breeze Subdomain:  
FDLFirstPresb



Facebook  
[First Presbyterian Church, Fond du Lac](https://www.facebook.com/FirstPresbyterianChurchFondDuLac)



YouTube  
[First Presbyterian Church, Fond du Lac](https://www.youtube.com/FirstPresbyterianChurchFondDuLac)